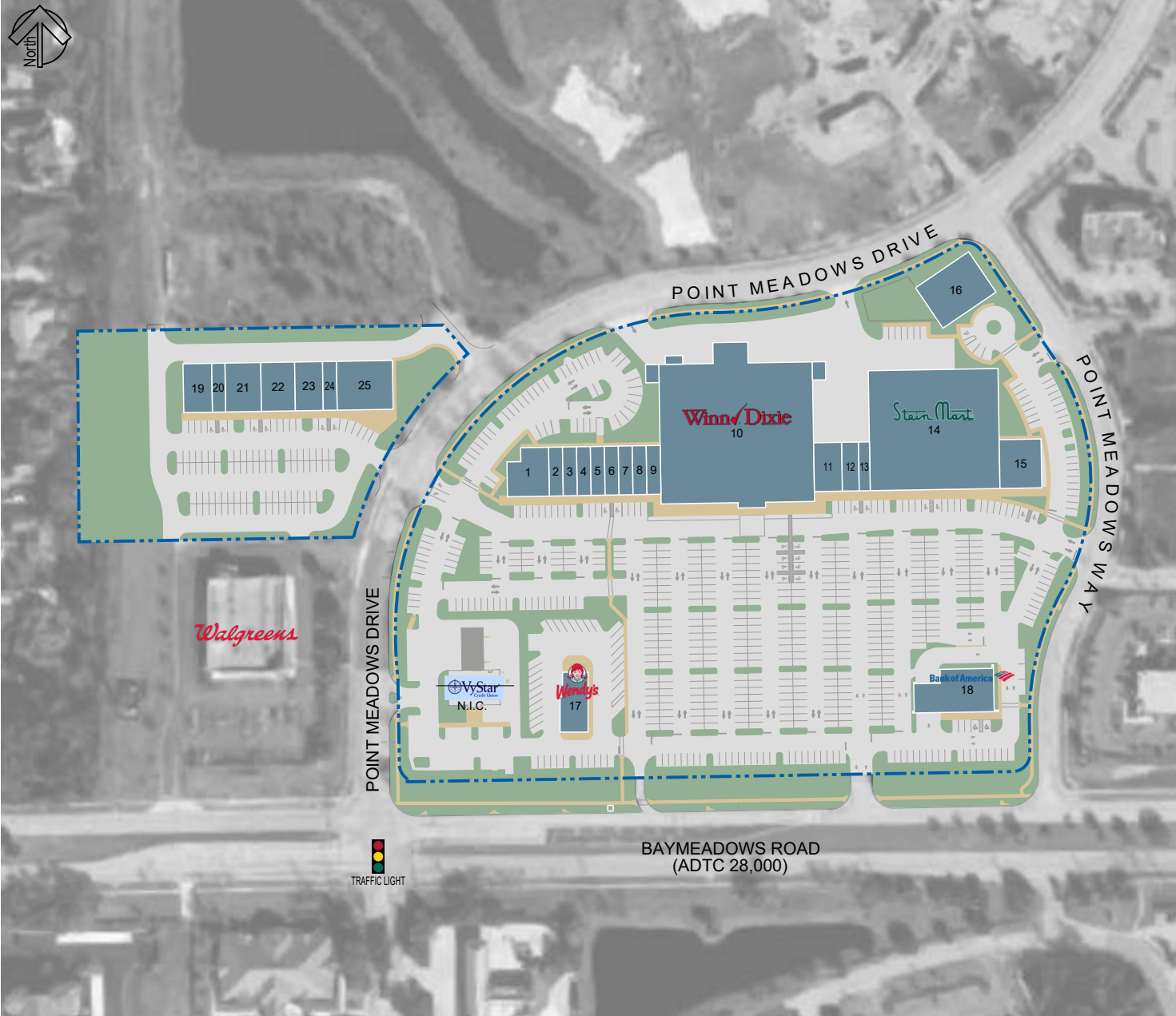


SITE SUMMARY			
ID	TENANT	UNIT	SIZE
1	TEQUILA MEXICAN RESTAURANT	101	3,800 sf
2	JAX HEALTH & PERFORMANCE	104	1,400 sf
3	JERSEY MIKE'S SUBS	105	1,400 sf
4	POINT MEADOWS DENTISTRY	106	1,400 sf
5	SCHRODER'S SCHOOL OF MUSIC	107	1,400 sf
6	SOL US TANNING	108	1,400 sf
7	CUTS BY US	109	1,400 sf
8	MANISH PATEL & ASSOCIATES	110	1,400 sf
9	TOTAL BODY SPORTS NUTRITION	111	1,400 sf
10	WINN DIXIE	120	45,802 sf
11	WINN DIXIE LIQUOR STORE	122	2,800 sf
12	TONYA'S JEWELRY	124	1,700 sf
13	NAIL WORLD	125	1,100 sf
14	STEIN MART	126	32,000 sf
15	WHISKEY JAX	136	4,200 sf
16	KINDER GARDEN	200	6,400 sf
17	WENDY'S	300	3,246 sf
18	BANK OF AMERICA	10925	4,594 sf
19	MAPLE STREET BISCUIT COMPANY	W01	2,879 sf
20	T-MOBILE	W03	1,358 sf
21	PAULA'S FINE FABRIC	W04	3,600 sf
22	FITNESS LAB JAX	W07	3,400 sf
23	BROOKLYN PIZZA	W09	2,800 sf
24	TIMWAH DIM SUM RESTAURANT	W11	1,400 sf
25	BOILING CRAWFISH	W12	5,600 sf



05/02/2017

JACKSONVILLE OFFICE
PHONE (904) 731-8806
FAX (904) 731-1252
www.sleiman.com

This site plan is presented solely for the purpose of identifying the approximate location and size of the building presently contemplated by the owner. Building sizes, site dimensions, access and parking areas, existing tenant locations and identities are subject to changes without notice and at the owners discretion. Unit numbers as indicated are not necessarily the actual suite number and are intended for use as reference only.